



投 资 指 南

Investment Guide



常州北站



目录

CONTENTS



常州市概况

General Information of Changzhou City

01



常州国家高新区概况

General Information about
Changzhou National Hi-tech District(CND)

03



投资环境

Investment Environment

07



专题园区

Industrial Parks

15



联系我们

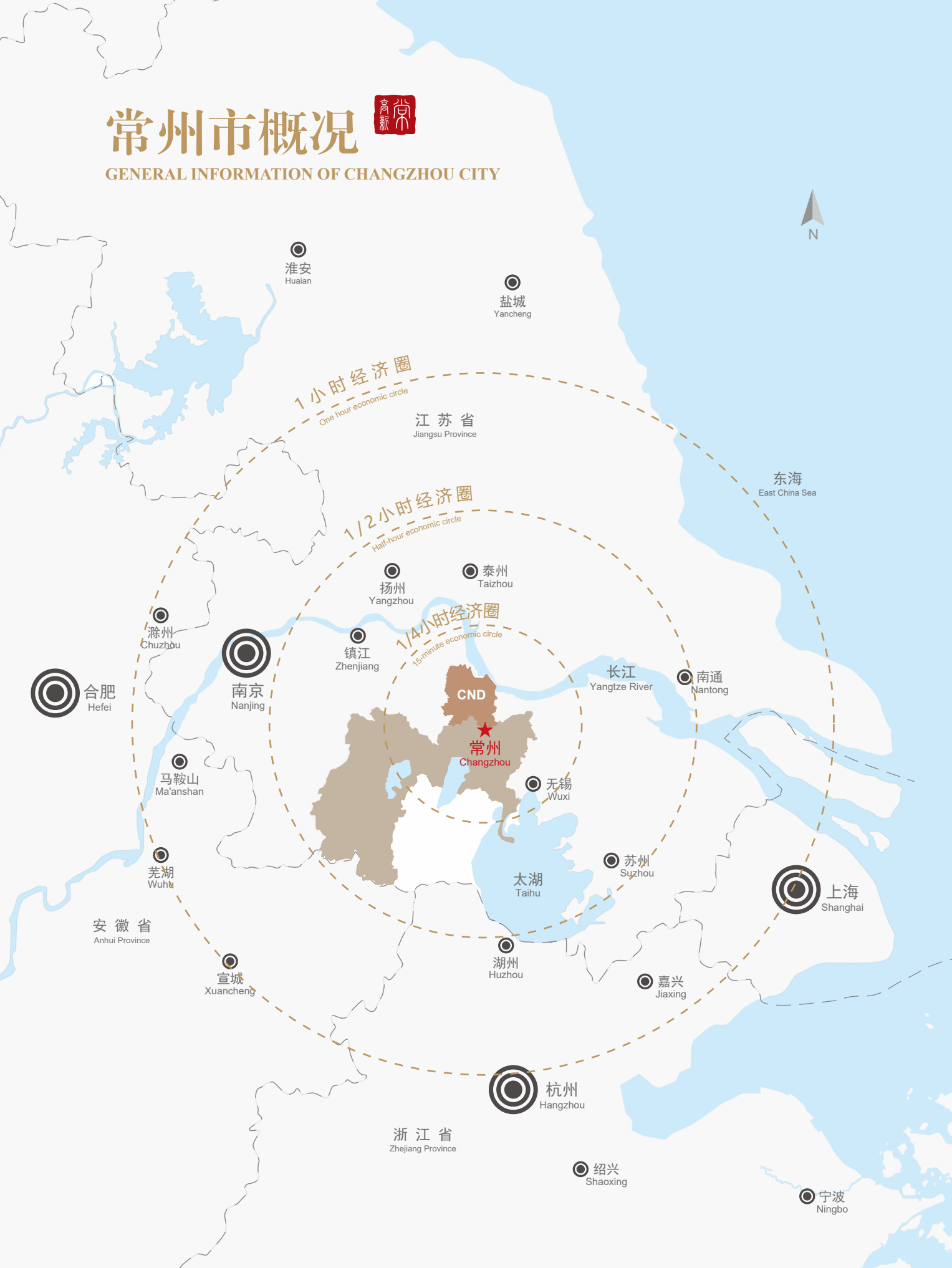
Contact Us

27

常州市概况



GENERAL INFORMATION OF CHANGZHOU CITY



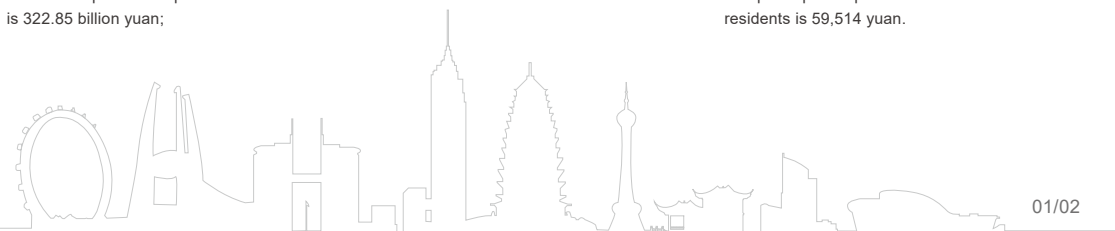
CHANGZHOU

常州位于长江之南、太湖之滨，已有3200多年的文字记载史，是一座江南文化古城，也是长三角重要的现代制造业基地。全市总面积4372km²，常住人口536.62万人，户籍人口389.21万人。

荣誉：全国文明城市、全国优秀旅游城市、全国科技创新示范市、全国社会治安综合治理优秀市、国家卫生城市、国家园林城市、国家环保模范城市、国家森林城市、国家历史文化名城、国家生态市、“中国制造2025”试点示范城市、中国人居环境综合奖榜首、国际花园城市金奖、全国地级市百强等。

Changzhou, a cultural city with a recorded history of over 3,200 years, lies in southern part of the lower reach of the Yangtze River and is adjacent to Taihu Lake. It is an important modern industrial city located in the Yangtze River Delta. The city covers an area of 4,385 km² and has a permanent resident population of 5.36 million and household registered population of 3.89 million.

Awards: National Civilized City, China's Excellent Tourism City, China's Demonstration City of Science and Technology Innovation, China's Excellent City for the Comprehensive Administration of Public Security, National Health City, National Garden City, National Environmental Protection Model City, National Forest City, National Famous Historic and Cultural City, National Ecological City, "Made in China 2025" Pilot Demonstration City, Top on the China Habitat Environment Comprehensive Award, Gold Medal of the International Garden City, One of Top 100 Prefecture-level Cities nationwide, etc.



常州国家高新区概况



GENERAL INFORMATION ABOUT CHANGZHOU NATIONAL HI-TECH DISTRICT (CND)

常州国家高新区是1992年11月经国务院批准成立的首批国家级高新区之一，也是苏南国家自主创新示范区的重要板块，综合实力位列全国国家级高新区第21位。全区总面积508.91km²，常住人口90.03万人，下辖5镇5街道。

荣誉：国家高新技术产业开发区二十年先进集体、江苏省先进开发区、国家生态工业示范园区、国家创新型科技园区、华东地区最具竞争力开发区、中日韩（江苏）产业合作示范园区等。

Established in November of 1992, Changzhou National Hi-Tech District (CND) is among the first group of State-level Hi-Tech Zones, and it is an important part of National Independent Innovative Demonstration Zone in Southern Jiangsu. The comprehensive strength ranks 21st among the national level high-tech zones. It covers an area of 508.91 km² with a permanent resident population of 900,300 inhabiting in five urban sub-districts and five rural towns.

Awards: Advanced Zone for 20 Years' Development of the State-level Hi-Tech Zones, Jiangsu Advanced Development Zone, National Demonstration Eco-industrial Park, National Innovative Science and Technology Park, the Most Competitive Zone in East China, China-Japan-South Korea (Jiangsu) Industrial Cooperation Demonstration Park, etc.



全区面积
508.91
平方公里
Area : 508.91 km²



● 地区生产总值: **1990.58** 亿元
GDP of CND: 199.058 billion yuan

● 规上工业总产值: **3429.7** 亿元
The gross output value of industrial enterprises above designated size: 342.97 billion yuan

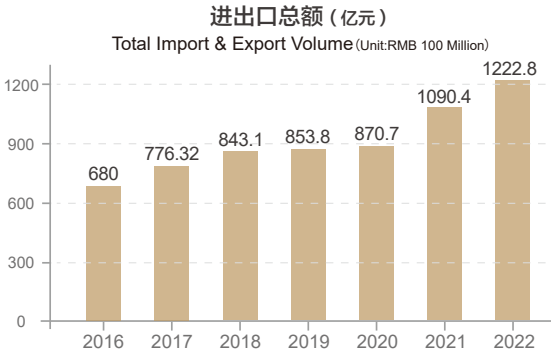
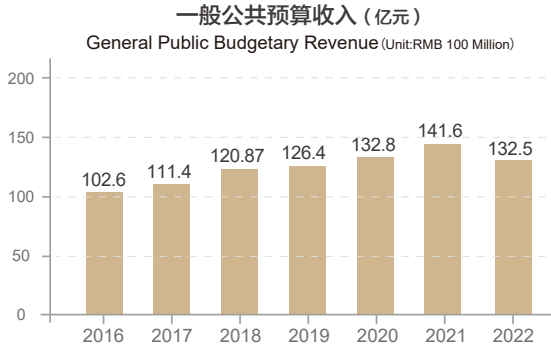
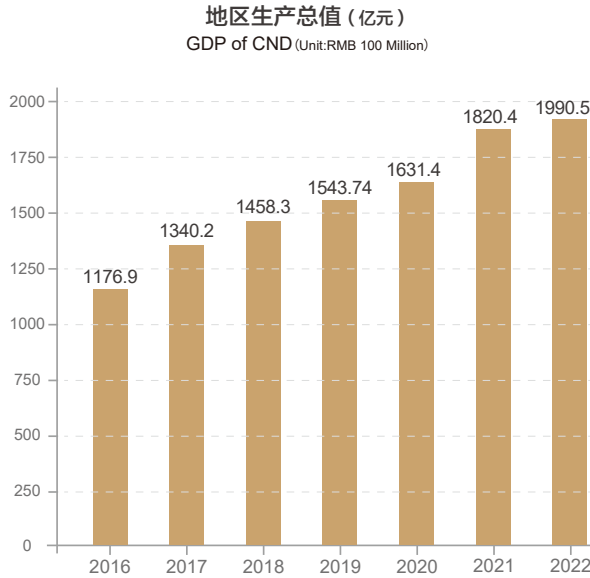
● 服务业增加值: **940.74** 亿元
Added value of service industry: 94.074 billion yuan

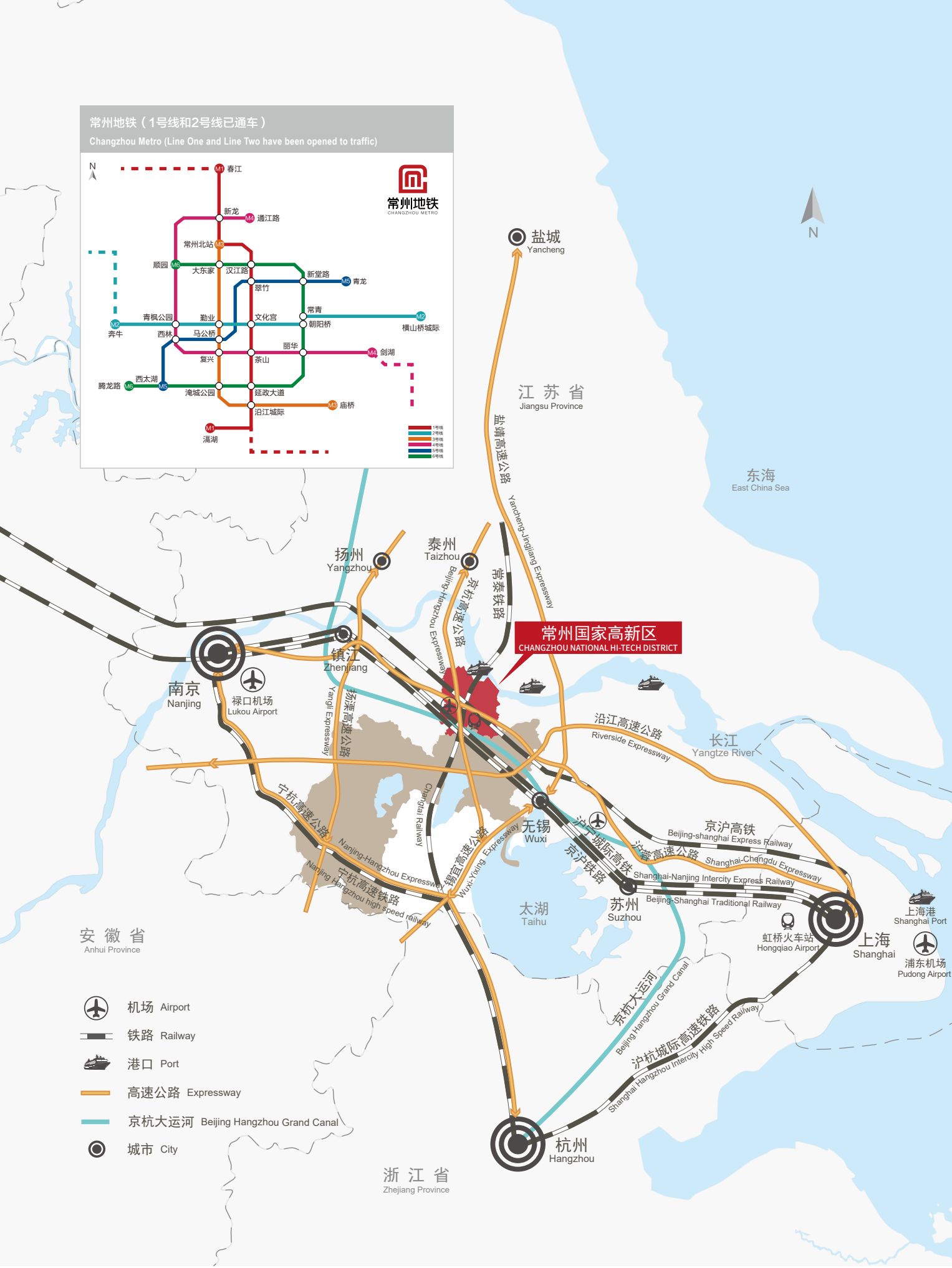
● 一般公共预算收入: **132.5** 亿元
The general public budgetary revenue: 13.25 billion yuan



发展业绩

STATUS ON ECONOMIC DEVELOPMENT OF CND







区位交通

LOCATION AND TRANSPORTATION

区内同时集聚水、陆、空、铁交通要素，构成四通八达、快速便捷的对外交通网络。

A fast and convenient transportation network including waterway, highway, airway and railway has been built in CND.



港口
PORT

长江常州港是国家一类开放口岸，拥有10万吨级通用码头和5万吨级石化码头，奔牛港是省内最大的内河港口

Changzhou Port on the Yangtze River is a national first-class open port with general docks each capable of loading 100,000 tons and petrochemical docks of 50,000 tons of each. Benniu Canal Port is the biggest inland harbor in Jiangsu Province



快速路
HIGHWAY

G42沪蓉高速、S39京杭高速等穿境而过，区内设有6个高速道口

G42 Shanghai-Chengdu Highway intersects with S39 Beijing-Hangzhou Highway in CND, with 6 entrance-and-exit access



机场
AIRPORT

常州奔牛国际机场是4E级国际机场，可直飞北京、广州、深圳等全国30多个城市，以及多个国际（地区）城市

Changzhou Benniu International Airport is a 4E level airport which provides direct flight service to more than 30 domestic cities including Beijing, Guangzhou, Shenzhen, as well as several international cities (regions)



铁路
RAILWAY

京沪高铁常州北站、京沪铁路奔牛货运站位于区内，已开通“常西欧”中欧班列

Changzhou North Station of the Beijing-Shanghai Hi-speed Railway and Benniu Cargo Station of the Beijing-Shanghai Railway are located in CND. Changzhou-Xi'an-Europe Feight Train has been opened to traffic



地铁
METRO

规划建设六条城市轨道交通线路，一号线和二号线已开通，分别连接城市的南北方向和东西方向

Changzhou has construction plan of six metro lines. Line One and Line Two have been opened to traffic, connecting north and south, east and west of the city, respectively

投资环境

INVESTMENT ENVIRONMENT

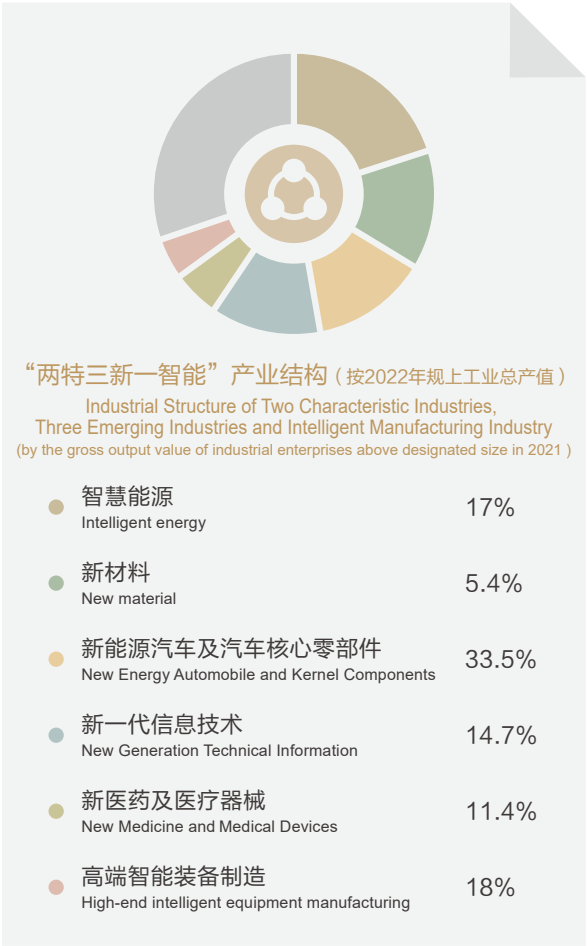
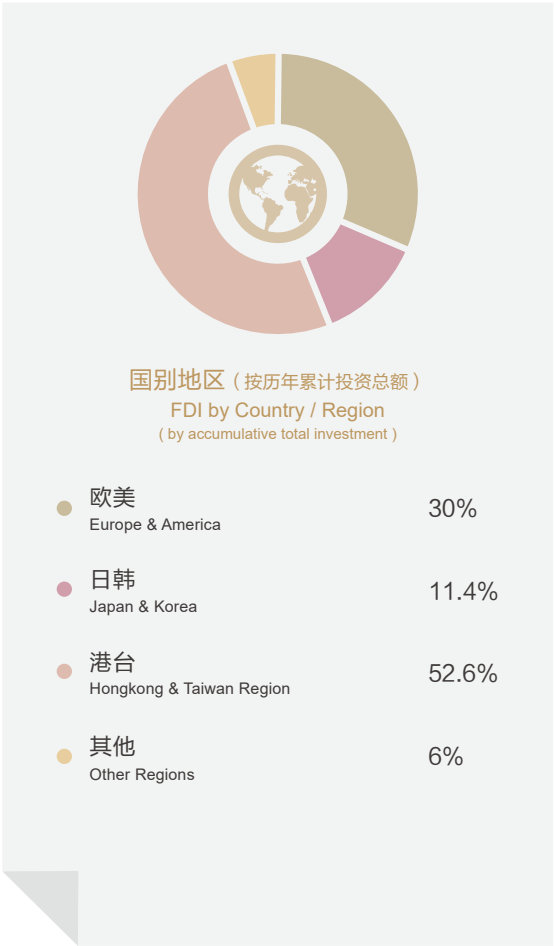


外商投资

FOREIGN INVESTMENT



- 68个国家(地区)的企业来区投资
 - 累计批准2000多家外商投资企业
 - 实际利用外资累计超146亿美元
 - 35家世界500强入区投资51个项目
- Foreign invested enterprises from 68 countries (regions)
— Cumulatively approved over 1,900 foreign invested enterprises
— The actual utilization of foreign capital has exceeded 14.6 billion US dollars
— 35 Fortune 500 enterprises have invested 51 projects in CND



产业导向

INDUSTRIAL ORIENTATION

全区重点发展“两特三新一智能”产业集群,即智慧能源产业、新材料产业,新能源汽车及汽车核心零部件产业、新一代信息技术产业、新医药及医疗器械产业,高端智能装备制造产业。

CND focuses on the development of two characteristic Industries of photovoltaic and smart energy, Intelligent energy industry, new material industry, new-energy automobile and automobile core parts industry, new-generation information technology industry, new medicine and medical device industry, high-end intelligent equipment manufacturing industry.







● 领军人才 / LEADING TALENTS

“龙城英才计划”创新创业人才1274名，诺贝尔奖得主1名、发达国家院士6名、国家级人才计划专家116名，入选省“双创团队”13个、省“双创人才”152名，潜在独角兽12家，瞪羚企业136家

There are 1,274 innovative and entrepreneurial talents, 1 Nobel Prize winner, 6 academicians from developed countries, 116 experts from national talent plan, 13 provincial "mass entrepreneurship and innovation teams" and 152 provincial "mass entrepreneurship and innovation talents". There are 12 potential unicorns and 136 gazelle companies

● 创新载体 / PLATFORM FOR INNOVATION

常州高新区累计建有重大创新平台13家，其中，事业法人单位性质5家，企业法人单位性质7家，非独立法人1家；与“双一流高校”共建5家（浙江大学常州工业技术研究院、南京师范大学常州创新发展研究院、南京大学常高新国际环保产业技术研究院、江苏海博工具产业研究院、常州先进陶瓷智能传感技术研究院），与中国科学院共建3家（常州中科遗传资源研发中心（南方）、江苏中科聚合新材料产业技术研究院、江苏天汇空间信息研究院），与知名央企共建3家（江苏集萃安泰创明先进能源材料研究院、江苏集萃碳纤维及复合材料应用技术研究院、常州电信5G创新生态实验室），与省产研院直接合作共建1家（长三角碳纤维及复合材料技术创新中心），与省产研院序列所合作共建1家（常州人工智能与仿生机器人研究中心）

CND has built 13 major innovation platforms, including 5 public institutions, 7 enterprises and 1 non-independent legal person. CND has jointly built 5 institutes with the help of "first-rate universities and disciplines", (Changzhou Institute of Industrial Technology of Zhejiang University, Changzhou Institute of Innovation and Development of Nanjing Normal University, Changgaoxin International Environmental Protection Industrial Technology Research Institute of Nanjing University, Jiangsu Haibo Tool Industry Research Institute, Changzhou Advanced Ceramic Intelligent Sensing Technology Research Institute). It has jointly established 3 research centers with the Chinese Academy of Sciences (Changzhou China Sciences Genetic Resources R&D Center (South China), Jiangsu China Sciences Polymeric New Material Industry Technology Research Institute, and Jiangsu Tianhui Spatial Information Research Institute). It has co-built 3 research centers with well-known central enterprises (Jiangsu JITRI Advanced Advanced Energy Materials Research Institute, Jiangsu CFCT Carbon Fiber and Composite Materials Application Technology Research Institute, Changzhou Telecom 5G Innovation Ecological Laboratory), and directly cooperated with provincial Research Institute of Industry and Technology to build 1 innovation center (Yangtze River Delta Carbon Fiber and Composite Materials Technology Innovation Center) and with Jiangsu Industrial Technology Research Institute to build 1 Center (Changzhou Artificial Intelligence and Bionic Robot Research Center).

● 高等教育和职业教育 / HIGHER EDUCATION & VOCATIONAL EDUCATION

区内建有河海大学、常州工学院、建东职业技术学院、江苏省常州技师学院、常州航空技工学校、常州旅游商贸学校、常州市体育运动学校等7所高职院校

In CND there are 7 universities and higher vocational colleges, such as Hohai University, Changzhou Institute of Technology, Jiandong Vocational and Technical College, Changzhou Technician College of Jiangsu Province, Changzhou Aviation Technician School, Changzhou Tourism and Trade School, and Changzhou Sports School

● 重点实验室 / KEY LABORATORY

光伏科学与技术国家重点实验室、江苏省高性能纤维复合材料重点实验室、江苏省汽车智能照明系统重点实验室等
State Key Laboratory of Photovoltaic Science and Engineering, Jiangsu Key Laboratory of High-performance Fiber Composite Materials, Jiangsu Key Laboratory of Automotive Intelligent Lighting System, etc.



● 别墅公寓 / HOUSE AND FLAT

区内建有高档公寓、白领公寓、人才公寓、青年公寓等，可满足广大投资者的不同需求

In CND, various types of accommodation are available. In addition, there are flats, apartments, dormitories to meet different needs

● 购物休闲 / SHOPPING AND LEISURE

区内现有新北万达广场、江南环球港等多座城市综合体，建有常州大剧院、博物馆、奥体中心、国家5A级景区环球恐龙城、传媒中心等文化、休闲、会展设施

In CND, there are Changzhou Xinbei Wanda Plaza, Jiangnan Global Harbour and many other shopping malls, as well as cultural, leisure and exhibition facilities of Changzhou Grand Theatre, Museum, Olympic Sports Center, National 5A Scenic Spot of Universal Dinosaur Town, Media Center, etc.

● 宾馆酒店 / HOTEL

区内建有万豪、喜来登、维景国际、富都盛贸等多家国际品牌高档宾馆酒店

There are many international brand hotels in CND, including Marriott, Sheraton, Grand Metropark, Traders Fudu

● 教育教学 / EDUCATION

区内建有7所高职院校、4所高中、19所初中、29所小学，并建有常州外国语附属双语学校，可满足投资者子女入学需求

In CND there are 7 higher vocational colleges, 4 senior high schools, 19 junior high schools and 29 primary schools in the district, as well as Changzhou Foreign Language Affiliated Bilingual School, which can meet the enrollment needs of investors' children

● 医疗卫生 / MEDICAL HEALTH

区内建有常州市第四人民医院（内设国际诊疗部）、三井医院等，可为投资者提供预约、挂号、检验和诊疗等一站式专业诊疗服务

In CND there are Changzhou Fourth People's Hospital (internal International Healthcare Department), Sanjing Hospital and etc., which provide one-stop professional service for investors, including booking, registration, check, diagnosis and treatment





常州

专题园区

INDUSTRIAL PARKS

常州国家高新区坚持以重大项目招引为抓手，以专题园区建设为支撑，着力提高经济质量效益和核心竞争力。围绕“两特三新一智能”的产业布局，重点打造滨江经济开发区、光伏产业园、生命健康产业园等区内重点产业板块和高质量发展强劲增长极——高铁新城。同时持续打造开放合作平台，加快中瑞（常州）国际产业创新园和中日（常州）智能制造产业园。抢抓扬子江城市群建设和跨江融合中轴崛起战略机遇，拓展未来发展新空间、探索“港产城”融合发展，建设常州综合港务区“三港一区”联动发展体系。

Changzhou National Hi-Tech District (CND) adheres to attracting major projects as the starting point, and takes the construction of industrial parks as the support to improve the quality and efficiency of economy and its core competitiveness. Focusing on the industrial layout of “Two Characteristic Industries, Three Emerging Industries and Intelligent Manufacturing Industry”, we have been developing Binjiang Economic Development Zone, Photovoltaic Industrial Park, Life Science Industrial Park, and Changzhou Hi-Speed Railway New Town. At the same time, we will continue to build an open and cooperative platform and accelerate the construction of Sino-Swiss (Changzhou) International Industrial Innovation Park and Sino-Japan (Changzhou) Intelligent Manufacturing Industrial Park. To seize the strategic opportunity of the construction of the Yangtze River urban agglomeration and the rise of central axis of cross-Yangtze River, expand new space for future development and explore the integration development of “Port-Industry-City”, CND has built the “Three Ports and One Zone” comprehensive development system of Changzhou Trade and Logistics Zone.



- 1

常州高铁新城
Changzhou High-Speed Railway New Town
- 2

常州滨江经济开发区
Changzhou Binjiang Economic Development Zone
- 3

光伏产业园（智能传感小镇）
Photovoltaic Industrial Park(Intelligence Sensor Town)
- 4

生命健康产业园
Life Science Industrial Park
- 5

空港产业园（智能装备产业园）
Airport Industrial Park(Intelligent Equipment Industrial Park)
- 6

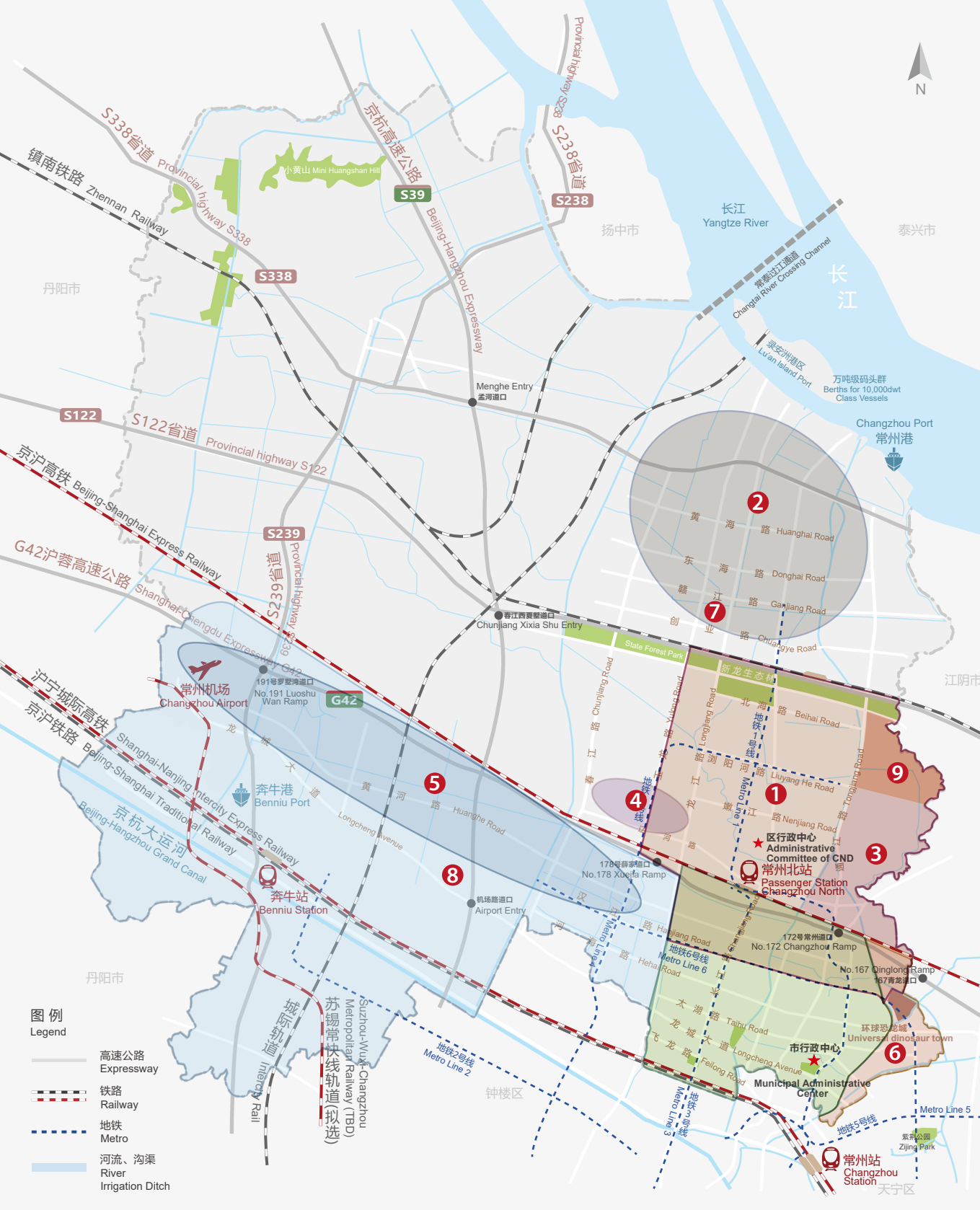
创意产业园
Creative Industrial Park
- 7

中瑞（常州）国际产业创新园
Sino-Swiss (Changzhou) International Industrial Innovation Park
- 8

中日（常州）智能制造产业园
Sino-Japan (Changzhou) Intelligent Manufacturing Industrial Park
- 9

常州综合保税区
Changzhou Free Trade Zone
- 10

常州综合港务区
Changzhou Trade and Logistics Zone





规划面积：56km²

载体平台：高新广场、绿创大厦、新桥大厦、新阳大厦、宇洋大厦、科创水镇、新科创大厦、常州高新区人力资源服务产业园、国家级科技企业孵化器、嘉壹度新度青年众创空间

重点企业：区域总部——天合光能、月星集团、常高新集团、黑牡丹集团、国网综合能源公司等

金融机构——江南银行、东海证券、建设银行常州分行、人保、新华保险等

产业导向：围绕高铁新城构建“内城外产、一区两园”新经济产业布局，形成特色产业、完善城市功能的总体要求，重点围绕“1+3”*产业战略定位，深耕现代服务业、先进制造业和科技服务业融合发展的产业格局，打造常州高质量发展的强劲增长极

高端产业：智慧能源、新一代信息技术、生命科学大健康、智能数据、智能传感等

新业态：企业总部、金融商贸、文旅休闲、科创研发等

*“1—现代服务业”：打造以“金融商务及总部经济、科技创新服务、特色型城市功能、专业型会议会展”为代表的现代服务业。

“3—先进制造业”：推进以能源互联网为核心的智慧能源产业、以空天信息、机器视觉、集成电路及智慧传感为重点的新一代信息技术产业、以生物医药及高端医疗装备为代表的生命科学大健康产业。

PLANNING AREA: 56 km²

CARRIER PLATFORM: Hi-tech Plaza, Lvchuang Building, Xinqiao Building, Xinyang Building, Yuyangda Building, Science & Innovation Watertown, Xinkechuang Building, Changzhou Human Resources Service Industrial Park, National High-tech Enterprise Incubator, JIAYIDU Youth Innovation Space

MAJOR ENTERPRISES:

Regional Headquarters – Trina Solar, Yuexing Group, Changzhou Hi-tech Group, Black Peony Group, State Grid Integrated Service Group, etc.

Financial institutions – Jiangnan Rural Commercial Bank, Donghai Securities, Changzhou Branch of China Construction Bank, PICC, New China Life Insurance, etc.

INDUSTRIAL ORIENTATION: Build a new economic and industrial layout of “inner city and outer industry area, one district and two parks” based on the Changzhou Hi-Speed Railway New Town, form the characteristic industrial clusters and improve urban functions, focus on the “1 + 3” * industrial strategic orientation, and deeply cultivate the industrial pattern of the integration and development of modern service industry, advanced manufacturing industry and science and technology service industry to build a strong growth pole of high-quality development in Changzhou

High-end Industries: Smart energy, new generation technical information, life and health, intelligent data, intelligent sensor, etc.

New formatsbusiness formats: Enterprise headquarters, finance and commerce, culture, tourism and leisure, science and technology, research and development, etc.

* “1 - modern service industry”: Create modern service industry featuring “financial business and headquarters economy, scientific and technological innovation service, characteristic city functions, professional conferences and exhibitions”.

“3 - advanced manufacturing industry”: Promote the smart energy industry with energy Internet as the core, the new generation technical information with aerospace information, optical sensing industry, integrated circuit and smart sensing as the focus, and the life and health industry with biomedicine and high-end medical equipment as the representative.



规划面积：总面积152km²，其中核心区面积34km²

载体平台：中瑞（常州）国际产业创新园、碳纤维及复合材料产业园、常州军民融合示范园、常州国家环保产业园

重点企业：新材料——中简科技、新创碳谷、朗盛、阿朗新科、英力士、阿克苏诺贝尔、住化电子、奇华顿、圣戈班

装备制造——东风日产、麦格纳、翰昂、诺贝丽斯、雷勃、贺尔碧格、科勒、太平洋电力、瓦卢瑞克

港口物流——宏川石化、建滔集团、德宝物流、安邦物流

产业导向：新材料：重点发展高性能纤维及树脂基复合材料、特种涂料和胶黏剂、电子化工材料、创新药及制剂等产业

装备制造：重点发展新能源汽车整车及关键零部件、高端精密制造、环保装备、智能电力电网设备等产业门类

港口物流：加强与制造业的联动，为综合港务区的建设提供有效支撑，推动港产城联合发展

PLANNING AREA: The total area is 152 km², of which the core area is 34 km²

CARRIER PLATFORM: China-Switzerland (Changzhou) International Industrial Innovation Park, Carbon Fiber and Composite Materials Industrial Park, Changzhou Military-civilian Integration Demonstration Park, Changzhou National Environmental Protection Industrial Park

MAJOR ENTERPRISES:

New materials – Sinorfibers Technology, Xinchuang Carbon Valley, Lanxess, Arlanxco, Ineos, Akzo Nobel, Sumitomo Chemical, Givaudan, Saint-Gobain

Equipment manufacturing – Dongfeng Nissan, Magna, Hanon, Novelis, Regal Beloit, HOERBIGER, Kohler, Pacific Power, Vallourec

Port logistics – GreatRiver, Kingboard Group, Turbo Logistics, Anbang Logistics

INDUSTRIAL ORIENTATION:

New materials: Focus on the development of high-performance fiber and resin matrix composites, special coatings and adhesives, electronic chemical materials, innovative drugs and pharmaceutical preparation technology and other industries

Equipment manufacturing: Focus on the development of new energy vehicles and key components, high-end precision manufacturing, environmental protection equipment, smart power grid equipment and other industrial categories

Port logistics: Strengthen coordination with manufacturing industry, provide effective support for the construction of Changzhou Trade and Logistics Zone, and promote the formation of an ideal situation for the development of Port-Industry-City integration



光伏产业园（智能传感小镇）

PHOTOVOLTAIC INDUSTRIAL PARK (INTELLIGENCE SENSOR TOWN)

规划面积：17.12km²

载体平台：江苏省光伏高技术特色产业基地、江苏省特色产业园、江苏省光伏特色产业集群、科技部火炬中心创新型产业集群建设试点、中国国际传感谷、省级特色小镇-智能传感小镇等

重点企业：天合光能、聚和材料、天合储能、森萨塔科技、安费诺定制连接器、澳弘电子、宏微科技、同惠电子、永祺车业、天纳克、华美光电、常荣电器、莱赛激光、诚瑞光学等

产业导向：重点发展光伏组件，银铝浆、背板等高端光伏耗材，光伏逆变器、控制器，储能系统及光伏设备制造，传感器以及集成电路研发制造、核心芯片、模块系统和终端产品制造等

PLANNING AREA: 16.9 km²

CARRIER PLATFORM: Photovoltaic High-tech Characteristic Industrial Base of Jiangsu Province, Characteristic Industrial Park of Jiangsu Province, Photovoltaic Characteristic Industry Cluster of Jiangsu Province, Pilot Area of Innovative Industry Cluster of Ministry of Science and Technology Torch Center, China International Sensor Valley, Provincial characteristic town - Intelligent sensing town, etc.

MAJOR ENTERPRISES: Trina Solar, Fusion New Material, Trina Energy Storage, Sensata Technology, Amphenol custom connector, Aohong Electronics, MICMAC, Tonghui Electronics, Yongqi Automobile industry, Tenneco, Huamei Photoelectric, Chang Rong Electric Appliances, Lesai Laser, Chengrui Optics, etc.

INDUSTRIAL ORIENTATION: Focusing on the development of photovoltaic modules, silver/aluminum paste, solar back sheet and other high-end photovoltaic consumables, photovoltaic inverters, controllers, energy storage systems and photovoltaic equipment manufacturing, R&D and manufacturing of sensor and IC, core chips, module systems and final product manufacturing, etc.



生命健康产业园

LIFE SCIENCE INDUSTRY

规划面积：11.5km²，一期6.3km²，二期5.2km²

园区荣誉：中国生物医药特色园区、江苏省医药产品出口基地、江苏省生物医药和工程高技术特色产业基地、江苏省“十三五”先进制造业基地、常州生物医药孵化器、国家外贸转型升级基地（西药）、江苏省特色创新（产业）示范园区、江苏省首批节水型园区等

重点企业：医疗器械企业：美敦力、捷迈邦美、史赛克、联影医疗、医沛生、英特赛克、派瑞格等
制药企业：药明康德、扬子江药业、翰森制药、兴和制药、千红制药等

产业导向：生物药品及制品、化学药品制剂、多肽药物、现代中药、医疗设备及器械、药用辅料及包材、生物试剂、卫生材料及医药用品、制药设备、数字医疗、医药外包服务（CXO）、特医保健食品、医美及美妆产品、医疗废物处置配套服务、公共卫生服务、健康体检或咨询等健康服务新业态、医疗保障体系建设等

PLANNING AREA: 11.5 km², Phase I: 6.3 km², Phase II: 5.2 km²

PARK HONOUR: China Characterized Bio-medicine Park, Jiangsu Medicine Export Base, Jiangsu High-tech Industrial Base of Bio-medicine & Bio-engineer, Jiangsu "13th Five-Year Plan" Advanced Manufacturing Base, Changzhou Biomedical Incubator, National Base for Transformation and Upgrading of Foreign Trade (Western Medicine), Jiangsu Characteristic Innovation (Industry) Demonstration Park, The First Batch of Water-saving Parks in Jiangsu, etc.

MAJOR ENTERPRISES: Major Enterprises: Medtech: Medtronic, ZimmerBiomet, Stryker, United Imaging, Yposmed, Intersurgical, Paragon Medical, etc. Pharmaceuticals: SAT of Wuxi Apptec, Yangtze River Pharmaceuticals, Hansoh Pharmaceutical, Kowa Pharmaceutical, Qianhong Pharmaceutical, etc.

INDUSTRIAL ORIENTATION: Biological drugs and products, chemical preparations, polypeptide drugs, modern traditional Chinese medicine, medical equipment and instruments, pharmaceutical excipients and packaging materials, biological reagents, sanitary materials and medical supplies, pharmaceutical equipment, digital medicine, pharmaceutical outsourcing service (CXO), special medical and health food, medical beauty and beauty products, medical waste disposal supporting services, public health services, physical examination or consultation and other new business forms of health services Construction of medical security system, etc.



空港产业园（智能装备产业园） AIRPORT INDUSTRIAL PARK(INTELLIGENT EQUIPMENT INDUSTRIAL PARK)

规划面积：37.19km²

载体平台：江苏省高端装备制造业特色基地、江苏省新型工业化产业示范基地、江苏省示范物流园区、常州市智能制造示范区、常州市外贸转型升级基地

重点企业：比亚迪、豪爵铃木、北汽集团、星宇车灯、捷佳创、新泉股份、蒂森克虏伯、特瑞斯、国机常林、住友电工、普利司通、贸联电子、欧文斯科宁、普拉迪数控、普洛斯仓储、中通快递、跨越速运等

产业导向：重点发展新能源汽车及核心零部件、高端智能装备、现代物流等产业

PLANNING AREA: 37.19 km²

CARRIER PLATFORM: Jiangsu Province high-end Equipment Manufacturing Industry Characteristic Base, Jiangsu Province New Industrialization Industry Demonstration base, Jiangsu Province Demonstration Logistics Park, Changzhou Intelligent Manufacturing Demonstration Zone, Changzhou Foreign Trade Transformation and Upgrading Base

MAJOR ENTERPRISES: Byd, Haojue Suzuki, Beijing Automotive Group, Xingyu Auto, Jiejia, Xinquan Stock, ThyssenKrupp, Terris, National Machinery Changlin, Sumitomo Electric, Bridgestone, Trade Union Electronics, Owens Corning, Praty Numerical Control, Prologis Storage, ZTO Express, Cross Express, etc

INDUSTRIAL ORIENTATION: We will focus on the development of new energy vehicles and core components, high-end intelligent equipment, modern logistics and other industries



创意产业园 CREATIVE INDUSTRIAL PARK

规划面积：350,000 m²

载体平台：国家电子商务示范基地、国家级文化和科技融合示范基地、全国版权示范园区、国家火炬计划软件产业基地、国家现代服务业文化创意产业化基地、国家数字娱乐产业示范基地、国家广告产业园区、国家动画产业基地

重点企业：富深协通、鑫亿软件、智蝶软件、新友畅、化龙网络、瑞新信息、浩森设计、赞奇科技、印象乾图、卓谨信息、诗唯雅、麦拉风等

产业导向：园区不断壮大以数字智造、数字医疗、数字政务、数字商务、数字展陈、数字文旅等为鲜明特色的数字经济细分领域矩阵，聚力营造区域一流的数字创新生态，努力打造全省全市数字经济标杆园区，高端现代服务业样板园区。

CONSTRUCTION AREA: 350,000 m²

CARRIER PLATFORM: National E-Commerce Demonstration Base, National Culture and Technology Integration Demonstration Base, National Copyright Demonstration Park, National Torch Plan Software Industry Base, National Modern Service Industry Cultural and Creative Industrialization Base, National Digital Entertainment Industry Demonstration Base, National Advertising Industry Park, National Animation Industry Base

MAJOR ENTERPRISES: Finstone, Xinyi software, Zhidie software, New Youchang, Hualong network, Ruixin Information, Haosen Design, Zanqi technology, impression dry map, Zhuojin information, Shiweiya, Merafeng, etc

INDUSTRIAL ORIENTATION: The park continues to expand the digital economy subdivision field matrix with the distinctive features of digital intelligent manufacturing, digital health care, digital government affairs, digital commerce, digital exhibition, digital tourism, etc., thus creating a regional first-class digital innovation ecology and striving to build the province's digital economy benchmark park and high-end modern service industry model park.



中瑞（常州）国际产业创新园

SINO-SWISS (CHANGZHOU) INTERNATIONAL INDUSTRIAL INNOVATION PARK

规划面积：一期规划占地面积1000亩，其中高标准工业厂房270000m²

二期规划占地面积800亩，其中高标准工业厂房占地400亩

载体平台：国家工信部国际经济技术合作中心与常州市人民政府共建园区、省级国际合作园区、中国（江苏）自由贸易试验区联动创新发展区、第二批江苏省海外人才离岸创新创业基地试点建设单位、市级科技企业加速器、纳入国家国际科技合作平台管理体系

重点企业：瑞士碎得、瑞士美德乐、德国罗森伯格、德国贺尔碧格、德国莱尼、德国亮智、德国弗兰德、德国科泰斯、芬兰劳特、瑞典莱克福斯、西班牙拉米、加拿大麦格纳、丹麦迪耐斯等

产业导向：重点招引来自瑞士、德国及周边国家（地区）的优势产业，鼓励发展装备制造、精密机械、汽车零部件、新材料和新一代信息技术产业

PLANNING AREA: 1,000 Mu for Phase I, with high standard industrial workshops over 270,000m²
800 Mu for Phase II, with high standard industrial workshops around 400 Mu

CARRIER PLATFORM: Co-Construction Park of the International Economic and Technological Cooperation Center of MIIT (Ministry of Industry and Information Technology) and Changzhou Municipal Government, Jiangsu Provincial International Cooperation Park, China (Jiangsu) Pilot Free Trade Zone Joint Innovation Development Zone, The second batch of Pilot Construction Units of Jiangsu Offshore Innovation and Entrepreneurship Base for Overseas Talents, Changzhou Science and Technology Enterprise Accelerator; listed in the National Platform Management System of International Science and Technology Cooperation

MAJOR ENTERPRISES: SID, Medela from Switzerland; Rosenberger, Hoerbiger, Leoni, Lanz, Flender, Cotesa from Germany; Raute from Finland; Lesjöfors from Sweden; Lamigraf from Spain; Magna from Canada; Dines, Denmark and etc.

INDUSTRIAL ORIENTATION: Focus on the advanced industries from Switzerland, Germany as well as surrounding countries (districts), encouraging industries including Equipment Manufacturing, Precision Machinery, Automobile Components, New Material and New Generation Technical Information



中日（常州）智能制造产业园

SINO-JAPAN (CHANGZHOU) INTELLIGENT MANUFACTURING INDUSTRIAL PARK

规划面积：147km²

载体平台：生命健康产业园、智能装备产业园、汽车零部件特色产业园等

重点企业：住友电工、小松工程机械、SMC、豪爵铃木、电装、普利司通、THK、兴和制药、霓达摩尔科技、恩梯恩阿爱必、托普拉精密紧固件、华日新材、拓自达电线、坤世精密、恒业轴瓦、胜代机械、姬菱科技、丸井科技、天隆精密、吉业斯益线束、和兴滤清器、安藤铁工、田上机械、NBK、等

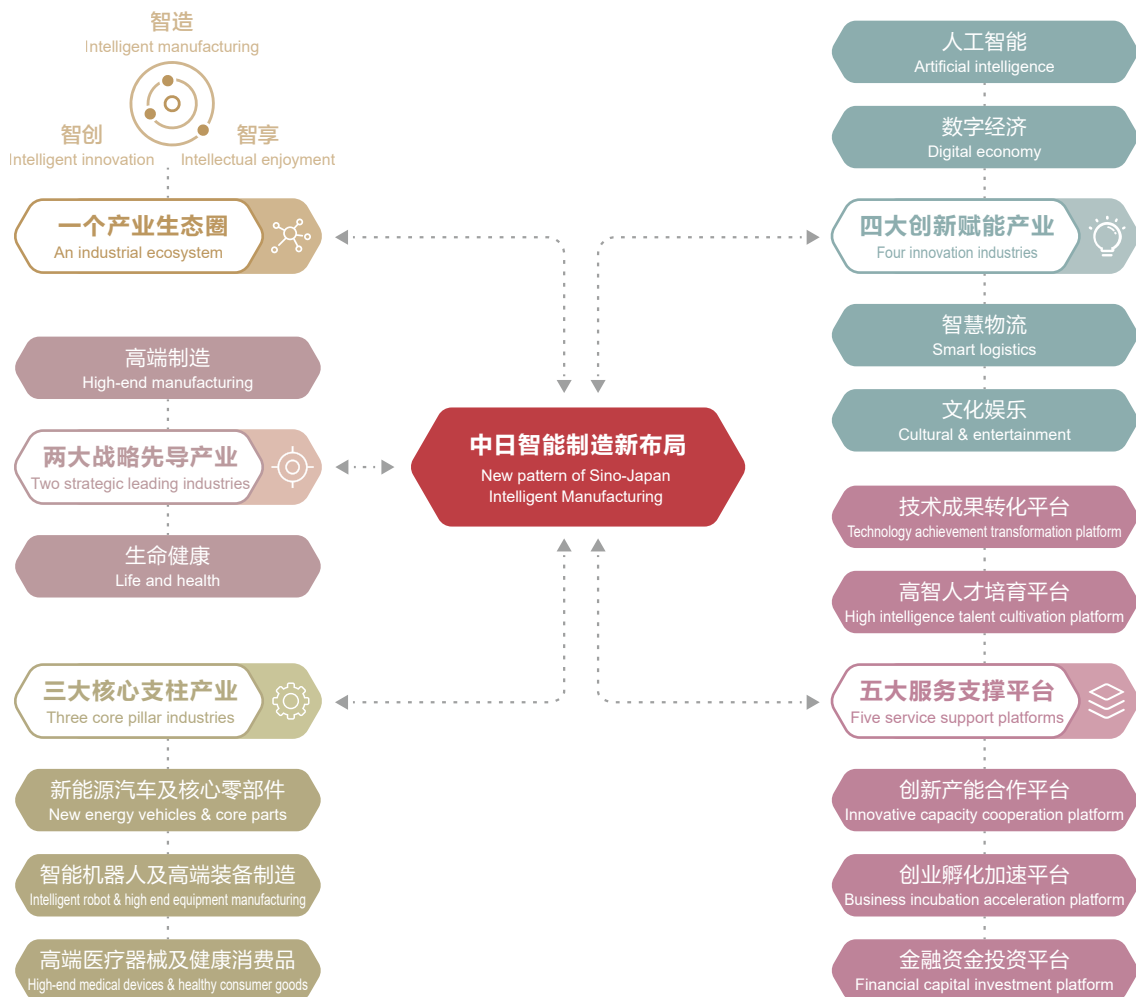
产业导向：重点发展新能源汽车及核心零部件、智能机器人及高端装备制造、高端医疗器械及健康消费品、人工智能、数字经济、智慧物流、文化娱乐等

PLANNING AREA: 147 km²

BASIC PROFILE: Life Science Industrial Park, Intelligent Equipment Industrial Park, Auto Parts Characteristic Industrial Park, etc.

STRATEGIES: Sumitomo Electric, Komatsu, SMC, HAOJUE-SUZUKI, Denso, Bridgestone, THK, KOWA, NITTA MOORE, NTN, Topura, Huari, TATSUTA, KONSEI, Hengye Bearing, KATSUSHIRO Machinery, HIMERYO Technology, MARUICHINA, DENRO, GSE, WAKO FILTER, ANDOTEKKO, TAGAMIEX Machinery, NBK, etc.

KEY POINTS: Focus on new energy automobile and kernel components, intelligent robots and high-end equipment manufacturing, high-end medical devices and healthy consumer goods, artificial intelligence, digital economy, intelligent logistics, culture and entertainment, etc.



常州综合保税区

CHANGZHOU FREE TRADE ZONE

规划面积：1.66km²

载体平台：常州保税物流基地、监管通关中心、进口预包装食品（化妆品）监管区、常州跨境电商产业园、常州跨境电商公共服务平台等

重点企业：诚瑞光学、巴奥米特、高博能源、优谷科技、马可波罗、酷克特斯、福地亚、大成精密、千家万铺等

产业导向：重点发展光学、医疗器械、新能源等先进制造业，积极拓展保税加工、保税物流、保税服务、国际贸易、国际中转等功能，叠加保税研发、保税维修、跨境电商等开放经济和服务贸易新业态

PLANNING AREA: 1.66 km²

CARRIER PLATFORM: Changzhou bonded Logistics Base, supervision and customs Clearance Center, Import pre-packaged food (cosmetics) supervision zone, Changzhou cross-border E-commerce Industrial Park, Changzhou cross-border e-commerce public service platform, etc.

MAJOR ENTERPRISES: Chengrui Optical Science, Baomit, Gaobo Energy, Yougu Technology, Marco Polo, Kukotes, Fudiya, Dacheng Precision, Qianjia Wanpu, etc

INDUSTRIAL ORIENTATION: Changzhou Free Trade Zone focuses on the development of the advanced manufacturing industries of optics, medical instruments and new energy, actively expands the functions of bonded processing, bonded logistics, bonded service, international trade and transit as well as new forms of open economy and service trade such as bonded research and development, bonded maintenance and cross-border e-commerce



常州综合港务区

CHANGZHOU TRADE AND LOGISTICS ZONE

基本概况：整合长江常州港、常州航空港、奔牛铁路港、常州综合保税区“三港一区”现有资源，构建“一城一港一集团”

发展方略：以港兴城、以港促产、产城融合

建设重点：重点建设“江海河铁公”联运综合枢纽中心、航空物流集散中心、大宗商品交易中转集散中心、综合保税功能服务中心四大产业中心

GENERAL INFORMATION: Changzhou Trade and Logistics Zone is acting actively in its capacity as the booster in acceleration of an integrated development of the grand Changzhou City through the unified efforts for logistics flow in relation to Changzhou Yangtze River Port, Changzhou Airport and Changzhou Railway Cargo-Waterway transfer Benniu Port. Together with Changzhou Free Tree Zone, we are greatly facilitating the distribution of commodities for manufacturing activities, for everyday life and the city development as a whole

DEVELOPMENT STRATEGY: City development and industrial growth enhanced by Changzhou Trade and Logistics Zone to achieve the integration of industry and city

KEY POINTS: The key development direction is the construction of four industrial centers, including the integrated transport hub center with waterway, high way and railway, the air logistics distribution center, the bulk commodity trading center and the comprehensive bonded service center



常州国家高新区招商局

CHANGZHOU NATIONAL HI-TECH DISTRICT (CND) INVESTMENT PROMOTION BUREAU



●服务理念 / SERVICE CONCEPT

诚信、法制、高效、双赢
Integrity Rule-by-law Efficiency Win-win

●服务模式 / SERVICE MODE

政务服务“一张网”，不见面审批
急郎中工作室，星期六审批直通车
Governmental service items all listed on one website
Administrative approval on line 24/7 without running errands
Problems to be solved in prompt settlement

●服务承诺 / COMPANY REGISTRATION

- 开办企业：1个工作日内完成
——不动产登记：3个工作日内完成
——工业建设项目施工许可：重大项目拿地即开工
- Company Registration: within 1 working day
- Property Registration: within 3 working days
- Construction Permit: Land for major projects will be immediately started



+86-519-8512 7710
+86-519-8858 8506



常州国家高新区（CND）
北京联络处 (Beijing Liaison Office)
上海联络处 (Shanghai Liaison Office)
深圳联络处 (Shenzhen Liaison Office)
德国联络处 (Germany Liaison Office)

- cndfib@cznd.org.cn
- alfie.zhou@cznd.org.cn
- yuki_chen@cznd.org.cn
- dingjunfeng@cznd.org.cn
- juan.huang@cznd.org.cn



中国江苏省常州市新北区辽河路518号
518 Liaohe Road, Xinbei District, Changzhou, Jiangsu, China



www.cznd.gov.cn